

PROJECT APPROVED BY



ORANJE
Creating...proud destinations !

SURAJ INFRAVENTURES (P) LTD

EMAAR GOMTI GREENS, SECTOR -7, GOMTI NAGAR EXTENSION,
LUCKNOW, UTTAR PRADESH




INFO@ORANJECO.IN

#OwnTheAddress
An European Castle Lifestyle Living

ORANJE
Creating...proud destinations !



RERA REGISTRATION NO: UPRERAPRJ9189

 www.oranje.co.in

 7081477773

ORANJE CASTLE

Oranje Castle is an ultra-luxury residential project offering European lifestyle experience in the city of Nawabs, Lucknow. Oranje is the outcome of three years of extensive lifestyle study across Europe, in order to successfully animate the tropical castle overlooking the Gomti River.

Oranje Castle is being developed by Suraj Infraventures Pvt. Ltd., a Lucknow based real estate development company, guided by few visionary & eminent businessmen of Uttar Pradesh.



AMENITIES

- European Style Castle Structure
- Large Bird Home in Central Park
- Sky Lounge
- External Facade of Machine Moulded Bricks
- Double External Wall with Cavity for Heat & Sound Insulation
- Earthquake Resistant RCC Framework
- Central Park Area Equivalent to Two Football Grounds
- Beautiful Landscaping with Water Bodies
- LED Lights in Landscape and Common Area
- Automatic Elevators With High Ceiling by Schindler/ OTIS/ ThyssenKrupp/ KONE
- Provision for Business Lounge
- 24 Hours Water Supply
- Temperature controlled Indoor Swimming Pool
- WiFi Enabled Campus
- 100% Power Backup
- Car Free Central Park
- Kids Creche Area
- Intercom Facilities in Each FLat Connected with Guard Room

SECURITY

- 24*7 Manned Security
- Intercom & Camera in Lifts Connected with Guard Room
- CCTV Surveillance
- Boom Barriers for Restricted Entry at main gate

HEALTH

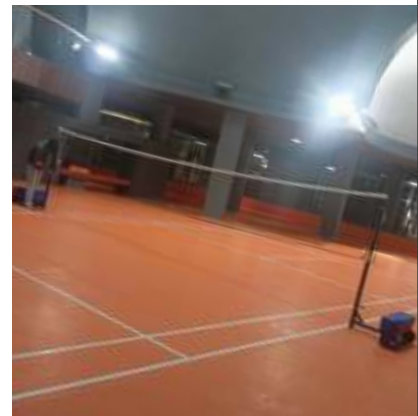
- Steam & Sauna Room with Massage Room
- Spa & Salon
- Gymnasium with Modern Equipments
- Jogging Track
- Children Play Area
- Climbing Mounds for Children

SPORTS

- Cricket Cage
- Basketball Court
- Tennis Court
- Chess Board Area
- Squash Court
- Badminton Court
- Table Tennis
- Card Room
- Billiards/Snooker Room

ENTERTAINMENT

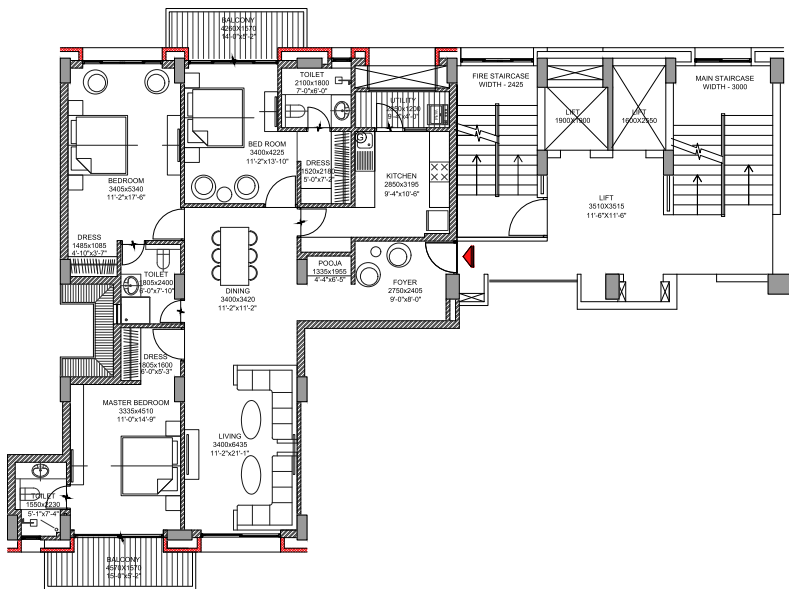
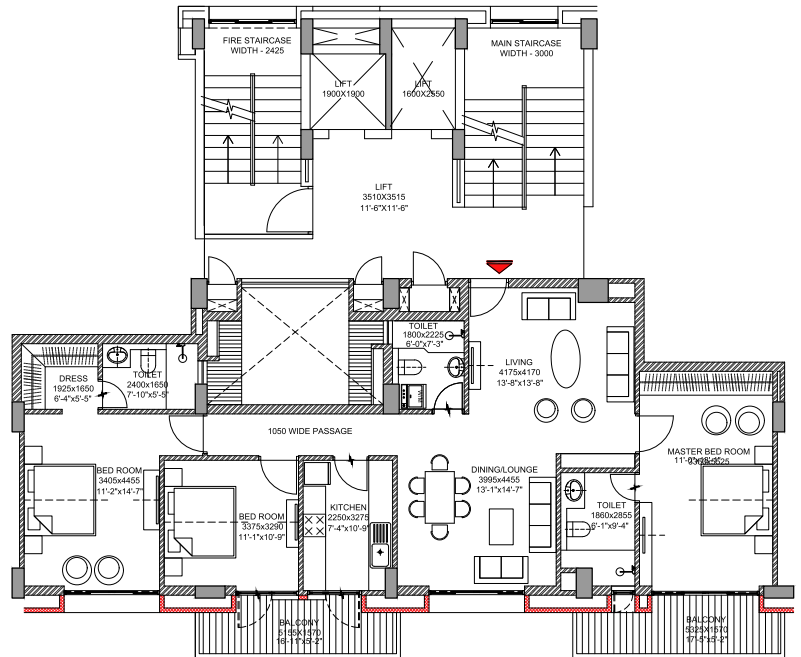
- Multi-Purpose Party Hall
- State-of-the-Art Club
- Amphitheatre
- Mini Theatre
- Restaurant/ Cafeteria
- Kids Gaming Zone



LAYOUT

3 BHK SIMPLEX

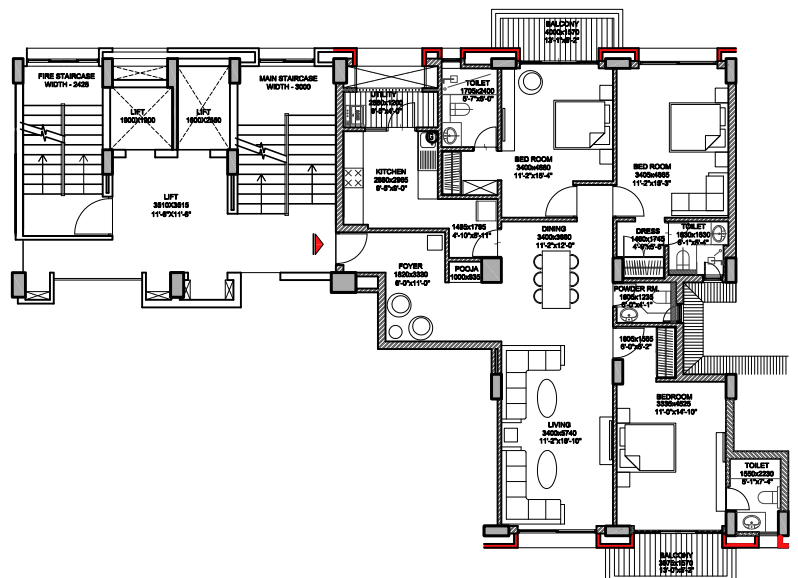
Super Area	1857 Sqft
Covered Area	1486 Sqft
Carpet Area	1158 Sqft
Balcony	169 Sqft



LAYOUT

3 BHK SIMPLEX

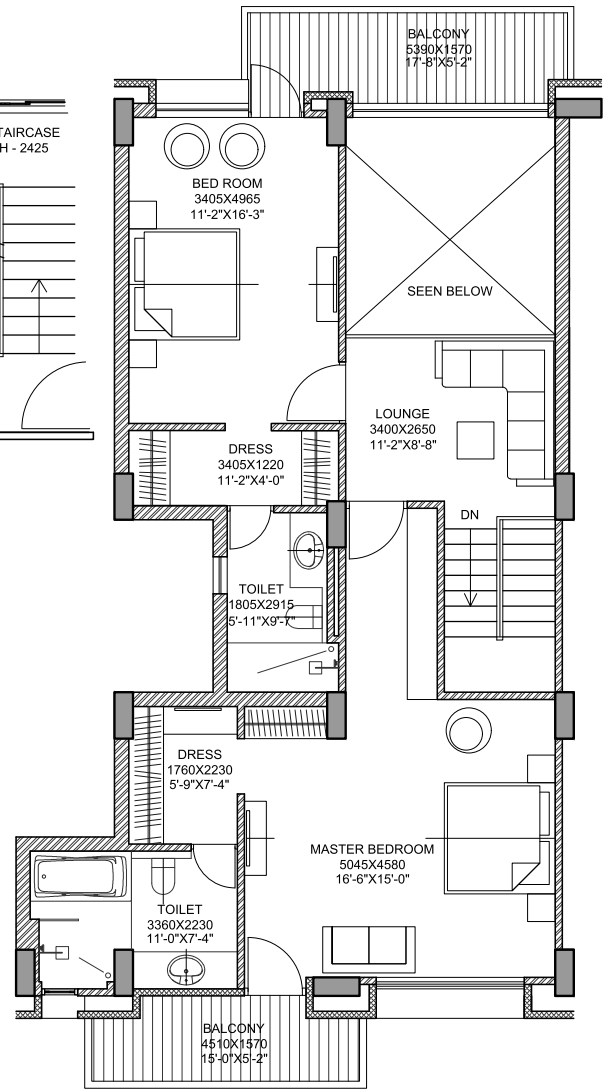
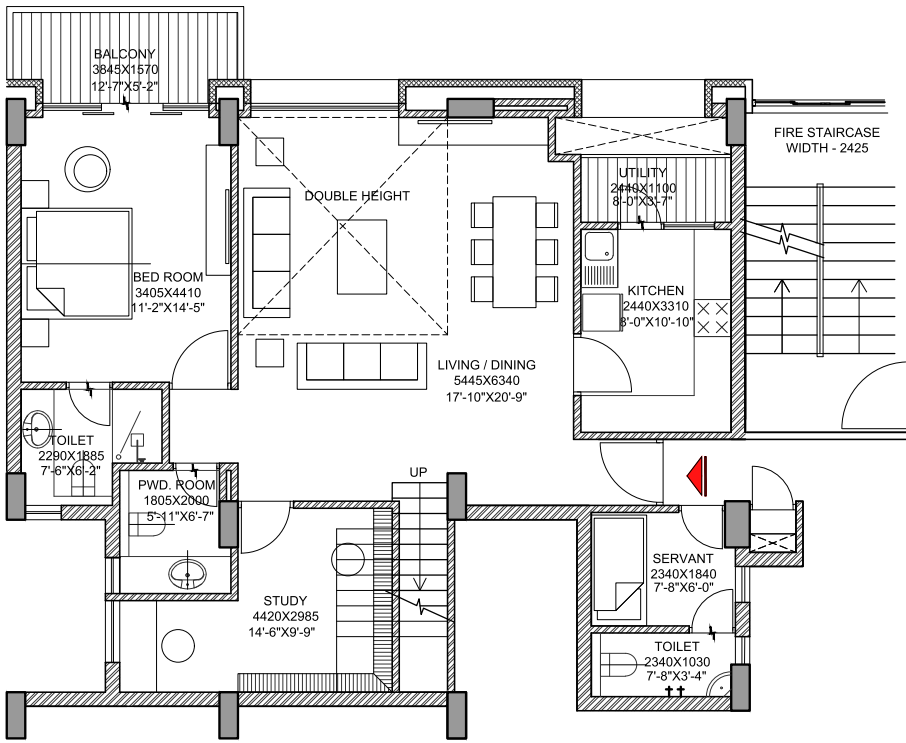
Super Area	2071 Sqft
Covered Area	1657 Sqft
Carpet Area	1297 Sqft
Balcony	142 Sqft



LAYOUT

3 BHK SIMPLEX

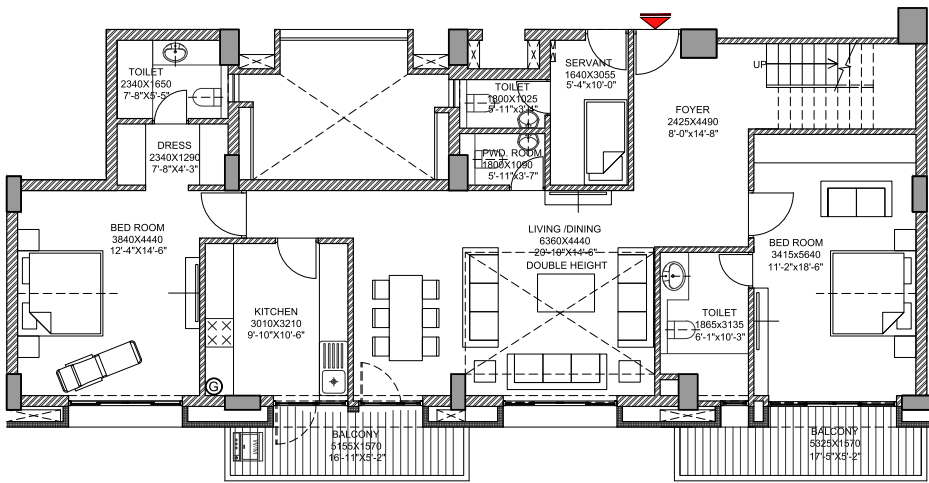
Super Area	2085 Sqft
Covered Area	1668 Sqft
Carpet Area	1317 Sqft
Balcony	128 Sqft



LAYOUT

3 BHK DUPLEX

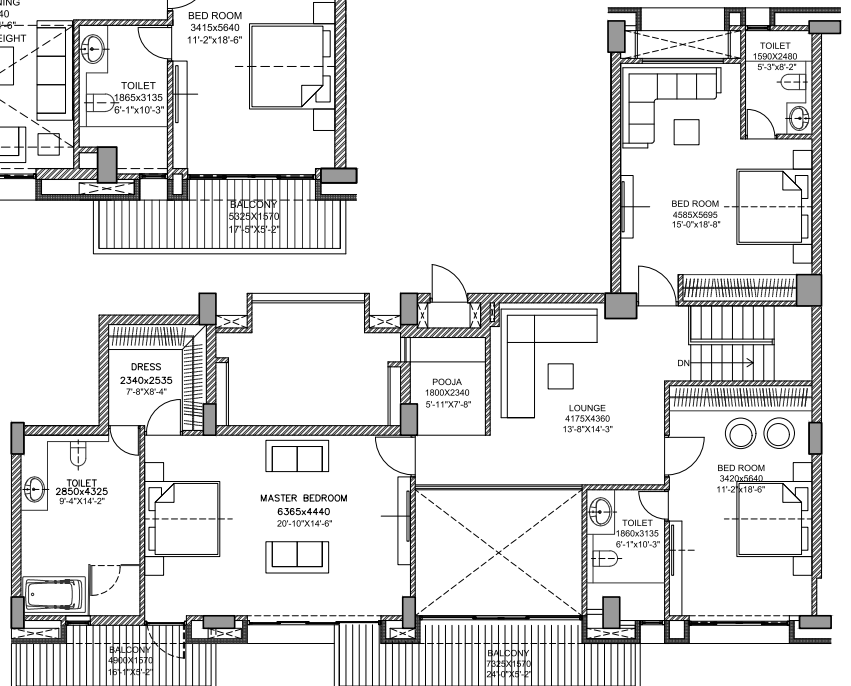
Super Area	2847 Sqft
Covered Area	2278 Sqft
Carpet Area	1736 Sqft
Balcony	223 Sqft



LAYOUT

5 BHK DUPLEX

Super Area	4115 Sqft
Covered Area	3292 Sqft
Carpet Area	2622 Sqft
Balcony	362 Sqft





- 1. Entrance lobby
- 2. Entry to courtyard
- 3. Entrance to basement
- 4. Exit from basement
- 5. Reception
- 6. Restaurant
- 7. Mini theater
- 8. Parking
- 9. Climbing and sitting mounds
- 10. Secondary Staircase
- 11. Bird House
- 12. Steps to Basement
- 13. Amphitheater
- 14. Rope climber
- 15. Green patch
- 16. Pergola
- 17. Trampolins
- 18. Water fountain
- 19. Basketball
- 20. Cricket
- 21. Chess
- 22. Ping Pong
- 23. Tennis
- 24. Green
- 25. Pavement
- 26. Services



12.0M WIDE ROAD

6M. WIDE ROAD

6M. WIDE ROAD

45.0M WIDE ROAD

600.0M WIDE

GOMTI RIVER

EMAAR MGF
RESIDENTIAL PLOT

EMAAR
RESIDENTIAL
PLOT

EMAAR
RESIDENTIAL
PLOT

EMAAR
RESIDENTIAL
PLOT

EMAAR
RESIDENTIAL
PLOT

EMAAR
RESIDENTIAL
PLOT

EXIT

EXIT

ENTER

SEEN BELOW

